

Confined Space Inventory for Saint Cloud Public Schools



Inspector: Rachel Koehler

Inspection Date: 1/23/2007

Building: South Junior High

Location: South Gym Behind Bleachers

Type of Space: Tunnel

Space Classification: Non-Permit

Potential Hazards:

No Hazards

Number of Entries into Space: 1

Other Considerations:

City sewer or water

Electrical

Poor lighting

Comments: Bleachers must be opened to access hatch.



Photo Date: 1/23/2007

Photo Description

Tunnel access behind bleachers.

Confined Space Inventory for Saint Cloud Public Schools



Inspector: Rachel Koehler

Inspection Date: 1/23/2007

Building: South Junior High

Location: Boiler Room

Type of Space: Tunnel

Space Classification: Non-Permit

Potential Hazards:

No Hazards

Number of Entries into Space: 4

Other Considerations:

Asbestos

City sewer or water

Electrical

Poor lighting

Steam pipes

Comments: Tunnel travels throughout building.



Photo Date: 1/23/2007

Photo Description

Tunnel access in Boiler Room.

Confined Space Inventory for Saint Cloud Public Schools



Inspector: Rachel Koehler

Inspection Date: 1/23/2007

Building: *South Junior High*

Location: *Boiler Room*

Type of Space: *Tunnel*

Space Classification: *Non-Permit*

Potential Hazards:

No Hazards

Number of Entries into Space: *1*

Other Considerations:

City sewer or water

Electrical

Poor lighting

Comments: *Tunnel travels around pool.*

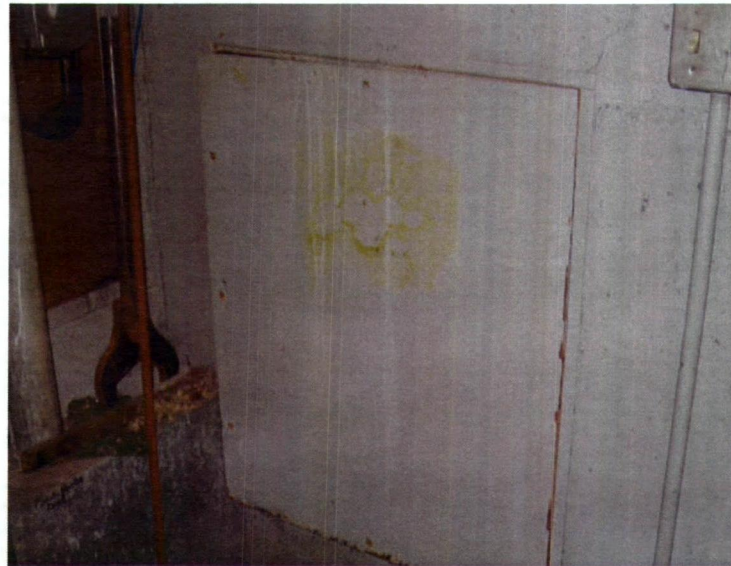


Photo Date: 1/23/2007

Photo Description

Tunnel access in Boiler Room.

Confined Space Inventory for Saint Cloud Public Schools



Inspector: Rachel Koehler

Inspection Date: 1/23/2007

Building: South Junior High

Location: Exterior Building West Parking Lot

Type of Space: Storm sewer (2)

Space Classification: Permit

Potential Hazards:

Potential for oxygen deficiency

Engulfment

Configuration

Number of Entries into Space: 1

Other Considerations:

City sewer or water

Fall hazards

Poor lighting

Slick/wet surfaces

Comments: None



Photo Date: 1/23/2007

Photo Description

Storm Sewer

Confined Space Inventory for Saint Cloud Public Schools



Inspector: Rachel Koehler

Inspection Date: 1/23/2007

Building: South Junior High

Location: Exterior Building East side

Type of Space: Fuel oil tank

Space Classification: Permit

Potential Hazards:

Flammable in excess of its LFL

Potential for oxygen deficiency

Engulfment

Configuration

Number of Entries into Space: 1

Other Considerations:

Poor lighting

Slick/wet surfaces

Comments: Tank must be emptied prior to entry.



Photo Date: 1/23/2007

Photo Description

Fuel Oil Tank

Confined Space Inventory for Saint Cloud Public Schools



Inspector: Rachel Koehler

Inspection Date: 1/23/2007

Building: South Junior High

Location: Pool/Music Elevator

Type of Space: Elevator shaft

Space Classification: Non-Permit

Potential Hazards:

No Hazards

Number of Entries into Space: 1

Other Considerations:

Electrical

Fall hazards

Falling objects

Comments: Lockout/Tagout procedures for elevator are required prior to entry.

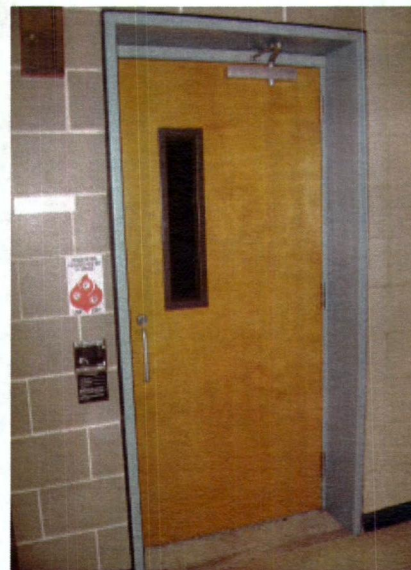


Photo Date: 1/23/2007

Photo Description

Elevator

Confined Space Inventory for Saint Cloud Public Schools



Inspector: Rachel Koehler

Inspection Date: 1/23/2007

Building: South Junior High

Location: Academics Elevator

Type of Space: Elevator shaft

Space Classification: Non-Permit

Potential Hazards:

Number of Entries into Space: 1

Other Considerations:

Electrical

Fall hazards

Falling objects

Comments: Lockout/Tagout procedures for elevator are required prior to entry.

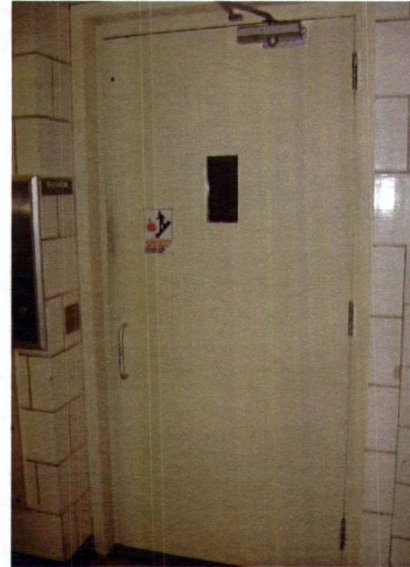


Photo Date: 1/23/2007

Photo Description

Elevator